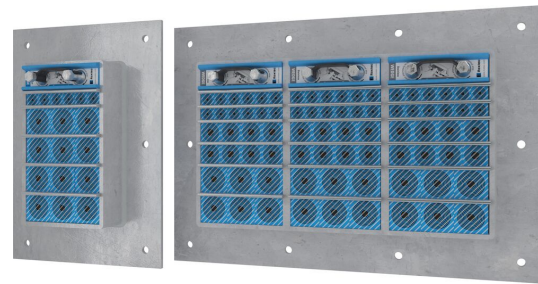




Roxtec GH EMC 穿隔系统

EMC 的穿隔系统可栓接到平整的结构上。

Roxtec GH EMC 是一种确保电磁兼容性的电缆和管道密封系统。其矩形钢制框架可栓接到钢制或夹芯墙体/地板上于可实现高密封密度。在提供电磁屏蔽的 Roxtec ES 密封模块与防止传导干扰的 PE 模块之间权衡选择。这两种模块可适配不同规格的电缆和管道。其穿隔系统可与镀锌钢 GE 扩展型框架配合使用于以适配较厚墙体的厚度。使用 Roxtec EC 检测条来测试 Roxtec BG™ 或 ES 电缆穿隔系统安装的电气性能。



- 防啮齿动物
- 易于维护和检查
- 具有内置备用容量

产品特性



耐火



IP/UL NEMA



EMI 保护

安装结构



箱柜和机柜



金属

安装类型



栓接

等级和证书

火灾

- E/EI 等级符合 EN 13501

密封性

- IP 66/67, IP 68

支持

- 电磁屏蔽
- 电位均衡

框架尺寸

mm/kg

下方的不同框架只是部分选择。要了解全部的框架和配置请访问 [roxtec.com](https://www.roxtec.com)。

标题	框架开口	密封空间	外部尺寸 W x H x D	开孔尺寸 w x h	重量	产品编号
GH 6x1 GALV	1	120 x 180	252.5 x 350 x 60	148(+5/-5) x 245(+5/-5)	4.4	5GH0000007882
GH 6x2 GALV	2	120 x 180	383 x 350 x 60	278(+5/-5) x 245(+5/-5)	7.5	5GH0000007828
GH 6x3 GALV	3	120 x 180	513.5 x 350 x 60	409(+5/-5) x 245(+5/-5)	10.4	5GH0000008108
GH 6x1 AISI316	1	120 x 180	252.5 x 350 x 60	148(+5/-5) x 245(+5/-5)	4.9	5GH0000008261
GH 6x2 AISI316	2	120 x 180	383 x 350 x 60	278(+5/-5) x 245(+5/-5)	7.3	5GH0000008179
GH 6x3 AISI316	3	120 x 180	513.5 x 350 x 60	409(+5/-5) x 245(+5/-5)	10.1	5GH0000009292

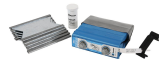


密封组件数据

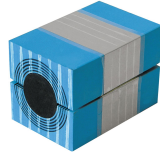
密封组件



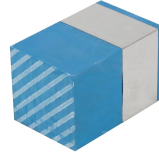
润滑脂



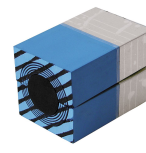
楔形压紧件和楔形压紧套件
ES 型



Multidiameter™ 多径
RM ES 模块



RM ES 盲堵模块



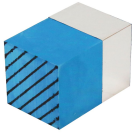
Multidiameter™ 多径
RM PE 模块



配件 ES 和 BG



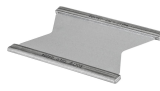
支架工具



RM PE 盲堵模块



楔形压紧件和楔形压紧套件



隔层板



ES 密封套件

如需了解详细信息请访问 [roxtec.com](https://www.roxtec.com)。

The product information provided by Roxtec does not release the purchaser of the Roxtec system, or part thereof, from the obligation to independently determine the suitability of the products for the intended process, installation and/or use.

Roxtec gives no guarantee for the Roxtec system or any part thereof and assumes no liability for any loss or damage whatsoever, whether direct, indirect, consequential, loss of profit or otherwise, occurred or caused by the Roxtec systems or installations containing components not manufactured by an authorized manufacturer and/or occurred or caused by the use of the Roxtec system in a manner or for an application other than for which the Roxtec system was designed or intended.

Roxtec expressly excludes any implied warranties of merchantability and fitness for a particular purpose and all other express or implied representations and warranties provided by statute or common law. User determines suitability of the Roxtec system for intended use and assumes all risk and liability in connection therewith. In no event shall Roxtec be liable for indirect, consequential, punitive, special, exemplary or incidental damages or losses.

The Roxtec products are offered and sold in accordance with the conditions of the Roxtec General Terms of Sales. The latest version of the Roxtec General Terms of Sales can be downloaded from <https://www.roxtec.com/en/about-us/about-roxtec/general-terms-of-sales/>

We reserve the right to make changes to the product and technical information without further notice. Any errors in print or entry are no claims for indemnity. The content of this publication is the property of Roxtec International AB and is protected by copyright.

This document was generated on: 2024-04-18